

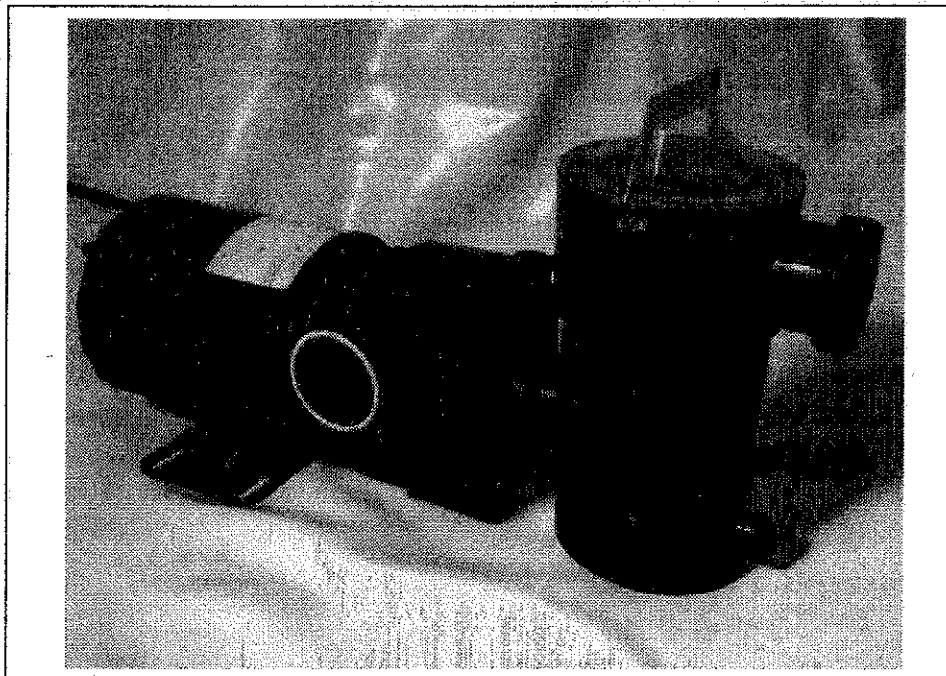
EMBASSY ♦ POOLCO.
A DIVISION OF HOFFINGER INDUSTRIES, INC.

H.E. Pump

Models 5-1015-000, 5-1016-000, 5-1017-000

Models 5-1015-006, 5-1016-006, 5-1017-006

Owner's Guide



IMPORTANT SAFETY INSTRUCTIONS

When installing and using this electrical equipment, basic safety precautions should always be followed, including the following:

READ AND FOLLOW ALL INSTRUCTIONS.

WARNINGS

1. **To reduce the risk of injury**, do not permit children to use this product unless they are closely supervised at all times.
2. Do not bury cord. Locate cord to minimize abuse from lawn mowers, hedge trimmers, and other equipment.
3. **Risk of electric shock.** Connect only to a grounding type receptacle protected by a Ground Fault Circuit Interrupter (GFCI). Contact a qualified electrician if you cannot verify that the receptacle is protected by a GFCI.
4. **To reduce the risk of electric shock**, replace damaged cord immediately.
5. **To reduce the risk of electric shock**, do not use an extension cord to connect unit to electric supply; provide a properly located outlet. For runs greater than 6 feet, consult your local licensed electrical contractor.
6. **To reduce the risk of electric shock**, make sure you and your clothing are dry before touching your filter or pump. Make sure the ground under your feet is dry.
7. **To reduce the risk of electric shock**, do not install your pump or filter on a deck. They could fall into the water causing severe electric shock or electrocution. Do not install on any surface at, above, or slightly below the top rail or water line of the pool.
8. Do not allow children or adults to climb sit or stand on your pump or filter. They could easily fall and injure themselves. Install the filter and pump a minimum of 4 feet from the pool wall so they may not be used as steps by children.

CAUTIONS

1. Do not install pump and filter system where flooding may occur. This could damage the pump motor.
2. Make sure the pump is disconnected from electrical source before servicing pump and filter equipment.
3. SAVE THESE INSTRUCTIONS.

LOCAL CODES

Contact your local building department for applicable codes or regulations governing the installation of swimming pool equipment.

CONTRACTED ELECTRICIANS

Always have a licensed electrician install electrical components to make sure electrical integrity is maintained in accordance with the pump data label. Improper installation to the power supply may damage the pump motor.

ELECTRICAL FEATURES

FOR MODELS:

5-1015-000, 5-1016-000, 5-1017-000

Your pump is supplied with a 6-foot, 3-wire electrical cord and 3 pronged plug. The pump electrical cord must be connected to a grounded, 3-wire, 115 VAC electrical receptacle. The receptacle must be protected by a Ground Fault Circuit Interrupter (GFCI).

An ON/OFF switch must be installed at the receptacle.

FOR MODELS:

5-1015-006, 5-1016-006, 5-1017-006

Your pump is supplied with a 3-foot, 3-wire electrical cord and a 3-prong flanged, twist-lock plug. The pump electrical cord must be connected to a single twist lock, grounding type receptacle that is located a minimum of 5 feet from the inside pool wall.

A qualified electrical contractor must install this receptacle in accordance with Article 680-6 of the National Electrical Code (NEC). A Ground Fault Interrupter (GFCI) must be used. An ON/OFF Switch must be installed at the receptacle.

Use a Hubbell No. 2310 Receptacle, 20 AMP 125 Volt A.C. or an equivalent receptacle that meets NEMA Configuration L5-20R.

This pump is double insulated and grounded. Dead metal parts are not in contact with pool water.

IMPORTANT:

INSTRUCTIONS AND SAFETY INFORMATION

If you have purchased a Embassy PoolCo filtration system, follow the instructions provided with your Embassy PoolCo filter instructing you to prepare the filter and pump foundation using patio blocks and a level.

PUMP ASSEMBLY

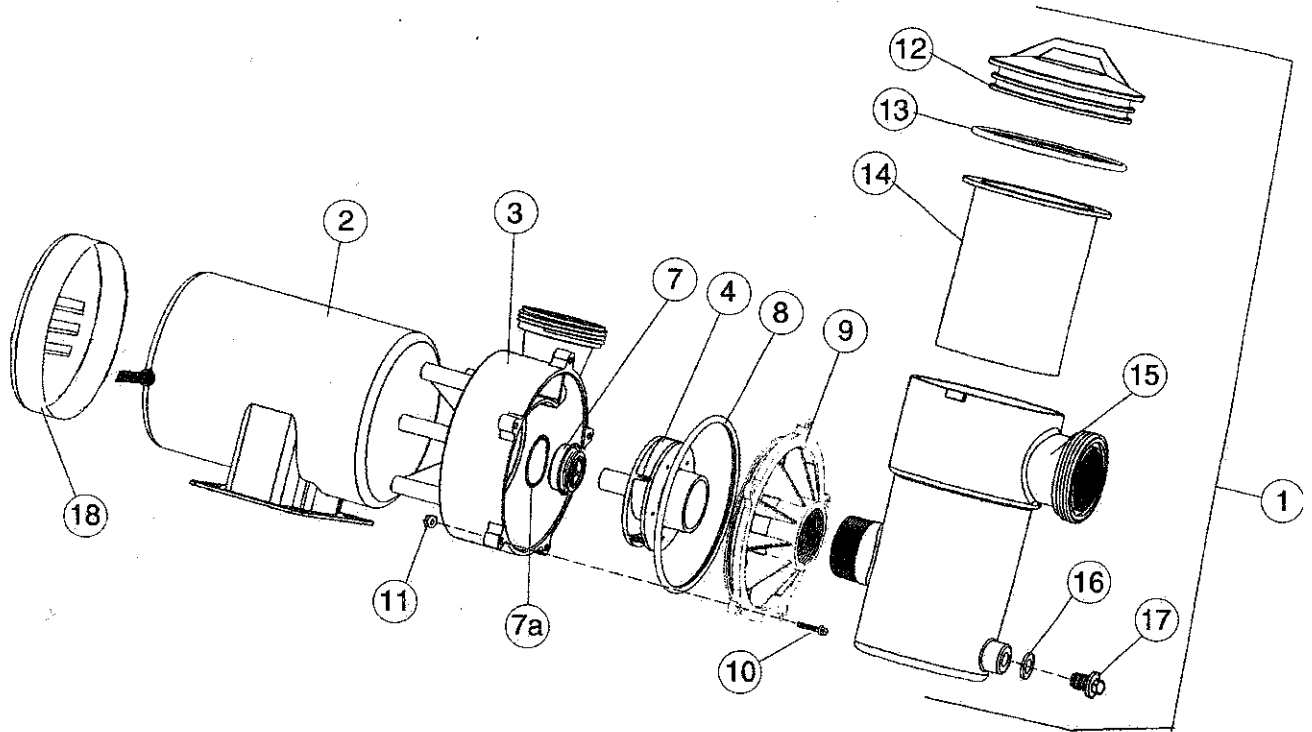
1. Position the pump near the filter. It is recommended that you install the pump on a flat surface such as a concrete slab.

Attach the pump to the pump base using all hardware provided with the pump. Tighten securely.

2. Thread strainer assembly into front of pump. Do not overtighten. Make sure strainer is vertical when installing hose.

EXPLODED VIEW AND PARTS LIST

Models 5-1015-000, 5-1016-000, 5-1017-000
Models 5-1015-006, 5-1016-006, 5-1017-006



ITEM	P/N	QTY	DESCRIPTION
1	1300-1047	1	Strainer Assembly - H.E.
2	300-1107	1	3/4-1 HP Motor w/ 6' cord
	300-1108	1	1-1/2 HP Motor w/ 6' cord
	300-1157	1	3/4-1 HP Motor w/ 3' NEC cord
	300-1158	1	1-1/2 HP Motor w/ 3' NEC cord
3	1128-1035	1	Backplate ass'y w/seal
4	1107-2457	1	Impeller Assy., 3/4 HP w/seal
	1107-2458	1	Impeller Assy., 1 HP w/seal
	1107-2459	1	Impeller Assy., 1-1/2 HP w/seal
5	1121-1577	1	5/8" Pump Seal Set-replacement
*6	308-1263	1	Pump Seal Seat-Ceramic-impeller
*7	308-1264	1	5/8" Pump Seal-Spring
7a	308-1040	1	O-ring (not included in 1121-1577)
8	308-1065	1	O-ring - pump volute
9	305-1033	1	Pump volute
10	330-1174	5	#10-24x1" hex head screws
11	321-1027	5	#10-24 Kep hex nut
12	1121-1436	1	Strainer lid /decal
13	308-1004	1	Strainer O-ring
14	1300-1002	1	Basket assembly
15	340-2513	1	Strainer body - H.E.
16	308-1011	1	O-ring - drain plug
17	340-2289	1	1/4" drain plug
18	340-2462	1	Motor end bell cover
19	340-1951	2	Hose adapter 1-1/2" (not shown)
20	365-1991	1	Owner's Guide
21	—	1	Warranty Card

* Included in 1121-1577 replacement seal kit

MAINTENANCE

Make sure the pump is disconnected from the electrical source before attempting any maintenance work.

LUBRICATION

Periodically lubricate the O-Ring under the strainer cover with a NON-PETROLEUM lubricant recommended for A.B.S., Noryl and Acrylic plastics. Consult your pool dealer for lubricant selections.

If you have any questions or require assistance, contact your Embassy pool dealer.

SERVICING SAFETY TIPS

- A. **ALWAYS TURN "OFF"** the main power switch and the Ground Fault Circuit Interrupter (GFCI) breaker switch so power is completely off before servicing your unit.
- B. **ALWAYS BE SURE THE GROUND UNDER YOUR FEET AND YOUR BODY IS DRY** before you touch electrical equipment. Failure to heed this warning may cause personal injury due to severe electrical shock.
- C. **ALWAYS** have a qualified electrician service your system if electrical problems occur. This system is

UL listed and must be serviced by a qualified electrician to insure that the electrical integrity is maintained. Failure to do so may cause personal injury due to severe electrical shock and may void the UL listing and warranty.

- D. **ALWAYS** have a qualified electrician install a Ground Fault Circuit Interrupter (GFCI) breaker at the electrical service or supply panel. Follow GFCI manufacturer's operating instructions for testing. Failure to do so may cause personal injury due to severe electrical shock.

CAUTION: To reduce the risk of electrical shock, connect only to grounding type receptacles. A Ground Fault Circuit Interrupter (GFCI) must be provided in accordance with local codes or ordinances.

Change of Design: Embassy PoolCo expressly reserves the right to change or modify the design and construction of any product in due course of our manufacturing procedures, without incurring any obligation or liability to furnish or install such changes or modifications on products previously or subsequently sold.

CAUTION: To reduce the risk of electric shock, use only Original Equipment Manufactured (OEM) replacement parts when servicing.



Embassy PoolCo • 315 N. Sebastian St. • West Helena, AR 72390